



## 16a Lower Bond

, Hinckley, LE10 1QU

£550 Per Month



A tastefully decorated second floor one bed roomed flat, ideally located within Hinckley's town centre, whilst being within walking distance of all local amenities. The property has the benefit of electric panel heating, PVCu double glazing, modern kitchen, shower room, double bedroom and well appointed lounge/dining room.



Reception hall

Modern kitchen (rear) 10'9" x 5'5" (3.28 x 1.67)

Stainless steel sink, range of base and wall units, associated work surfaces, range of base and wall units split level ceramic hob and electric oven.

Spacious lounge /dining room (front) 16'3" x 9'7" (4.97 x 2.93)

PVCu double glazed window and electric panel heater.

Modern shower room(rear). 10'4" x 5'2" (3.16 x 1.58)

Suite in white, corner shower cubicle with an electric shower, wash hand basin, low flush wc, obscure PVCu double glazed window and and wall heater.

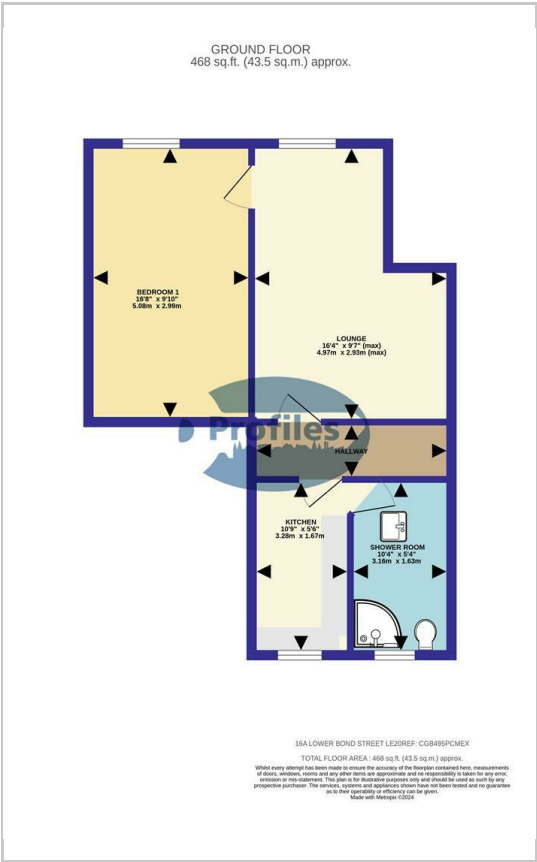
Doiuble bedroom (front). 16'7" x 9'9" (5.08 x 2.99)

PVCu double glazed window and electric panel heater.

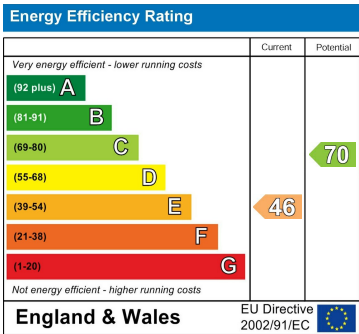
Area Map



Floor Plans



Energy Efficiency Graph



These particulars, whilst believed to be accurate are set out as a general outline only for guidance and do not constitute any part of an offer or contract. Intending purchasers should not rely on them as statements of representation of fact, but must satisfy themselves by inspection or otherwise as to their accuracy. No person in this firms employment has the authority to make or give any representation or warranty in respect of the property.